



COPPER VALLEY COMMUNITY SERVICES DISTRICT

Mailing: PO BOX 5158, Sonora CA 95370
Physical: 3840 Little John Road
Copperopolis, CA 95228
(209) 785-0100 – saddlecreekcsd.org

DIRECTORS

Larry Hoffman, President
Ken Albertson, Vice President
Darlene DeBaldo
Roger Golden

March 1, 2021

Dear Copper Valley Residents,

Recently the Copper Valley CSD made an upgrade to the gate entry system. In addition to the remote-control clicker program, we now have Radio Frequency Identification Detection system (RFID). It consists of a sticker that is installed on your vehicle that automatically opens the residents gate as you approach it. It has the same high level of security that has been in place for all of our gate access devices. The CSD now have RFID stickers available. Each Resident will be able to turn in up to two remote control clickers in exchange for two stickers per household, at no charge. Any additional stickers are \$15. In order to exchange or purchase the new RFID stickers you must fill out the new Gate Access Request form. We have included the new form with this email. Residents may also obtain the new gate access request form at the gate house or download it from the District website at coppervalleycsd.org. Once you have the form filled out you may return it to the gate house or mail, email and fax it to the CSD office. All contact information is at the bottom this page. Once your form has been processed you will be contact by the district staff with direction to pick up your new stickers.

The District recommends installing the sticker on the inside of the windshield for life longevity of the sticker, please refer to the set of instructions attached.

If you have any further questions, please do not hesitate to call the District Office at 209-785-0100 for assistance.

Thank you,

Greg Hebard
Site Manager

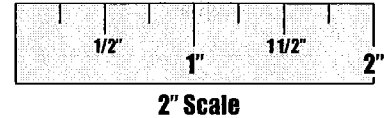
Copper Valley CSD
Mail - P.O. Box 5158 Sonora Ca 95370
Office - 209-785-0100
Fax - 209-785-6260
Email - mcgeorgecvcsd@caltel.com

HEADLIGHT/WINDSHIELD TAG FOR LONG RANGE ANTENNA

DoorKing Part Number
1508-195

The Headlight/windshield TAG is designed to be used with the DKS 1815-350 Long Range Reader. The Tag does not contain a battery, so it never wears out. The UHF long range antenna emits an RF signal which powers the Tag when the Tag enters the scanning area of the antenna. The Tag relays its Wiegand number back to the antenna which reports the Tag's number to a connected access control system. The Tag is an effortless way to open a gate for an **authorized** vehicle.

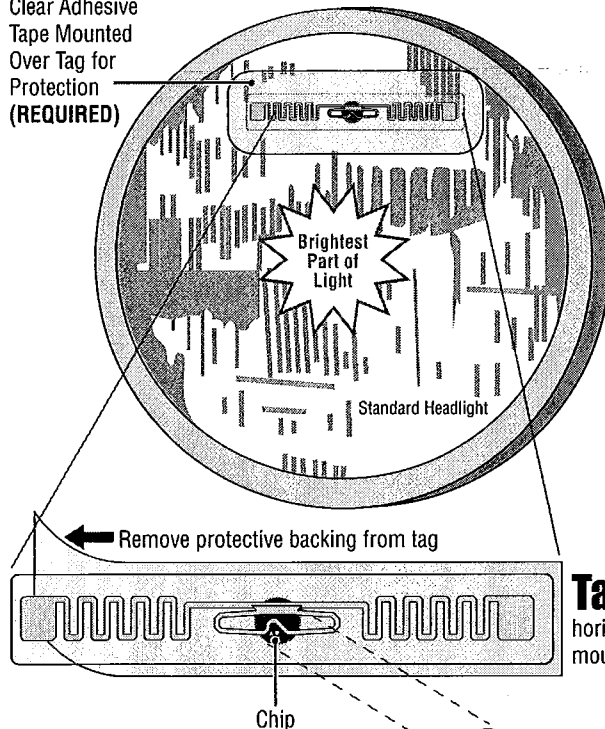
Note: Wiegand code for the tag is printed on the outside of the envelope that the tag was shipped in.



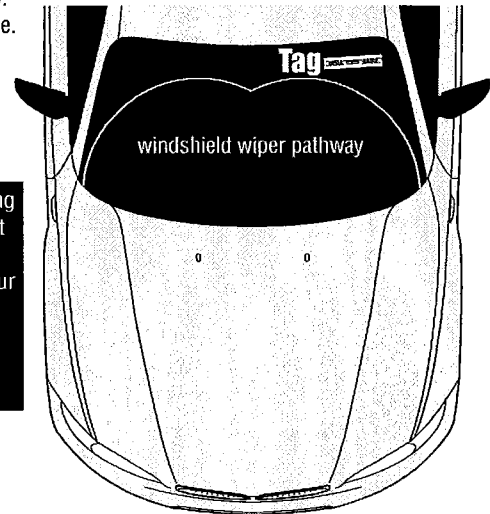
Installation

Tag may be mounted on the headlight (BEST RECEPTION) or windshield **NO closer than 2" away from any metal**. The farther away from metal, the better the reception. **ONLY** mount tag horizontally as shown. **DO NOT** mount tag vertically. It should be mounted out of the pathway of the windshield wiper blade when mounted outside. Clear adhesive tape **MUST** be placed over the tag to protect it from weather and car washing.

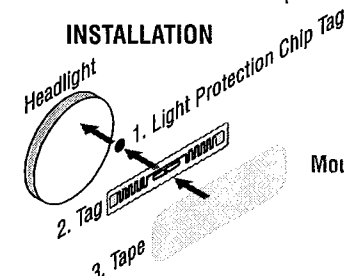
Clear Adhesive
Tape Mounted
Over Tag for
Protection
(REQUIRED)



IMPORTANT: Mounting this tag on a headlight is illegal in some states. Check with your State Department of Transportation before mounting tags on headlights.



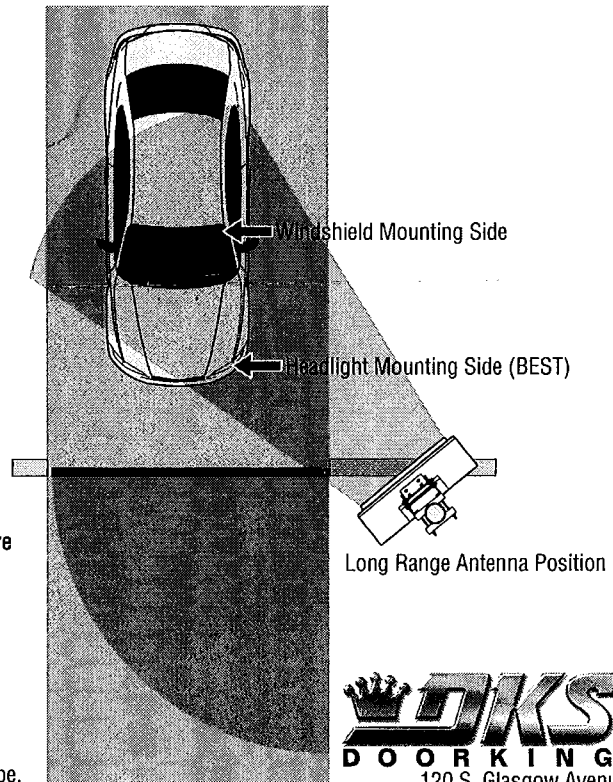
Mount Tag on **SAME** side of car as antenna if possible.



Light Protection Chip Tag

Mount **SPECIFICALLY** where shown between headlight and Tag. Protects the chip in the center of the tag from headlight's intense light.

Tag
horizontally
mounted



BEFORE INSTALLATION: Temporarily tape tags in place and test tag before permanently mounting them.

When mounting on headlight, place tag **off center** and away from the **brightest part of the light**. **Make sure to turn head light ON during test**. Some headlights, when turned **ON**, will **impede antenna signal** when tag is positioned **directly over** the brightest part of the light. Light Protection Chip Tag helps correct this.

The Tags will be **destroyed** if removed after permanently mounting. Make sure surface is **CLEAN** before mounting tags and the clear adhesive tape.