

Pitto and Associate's Pond Detail Chart

Exhibit A

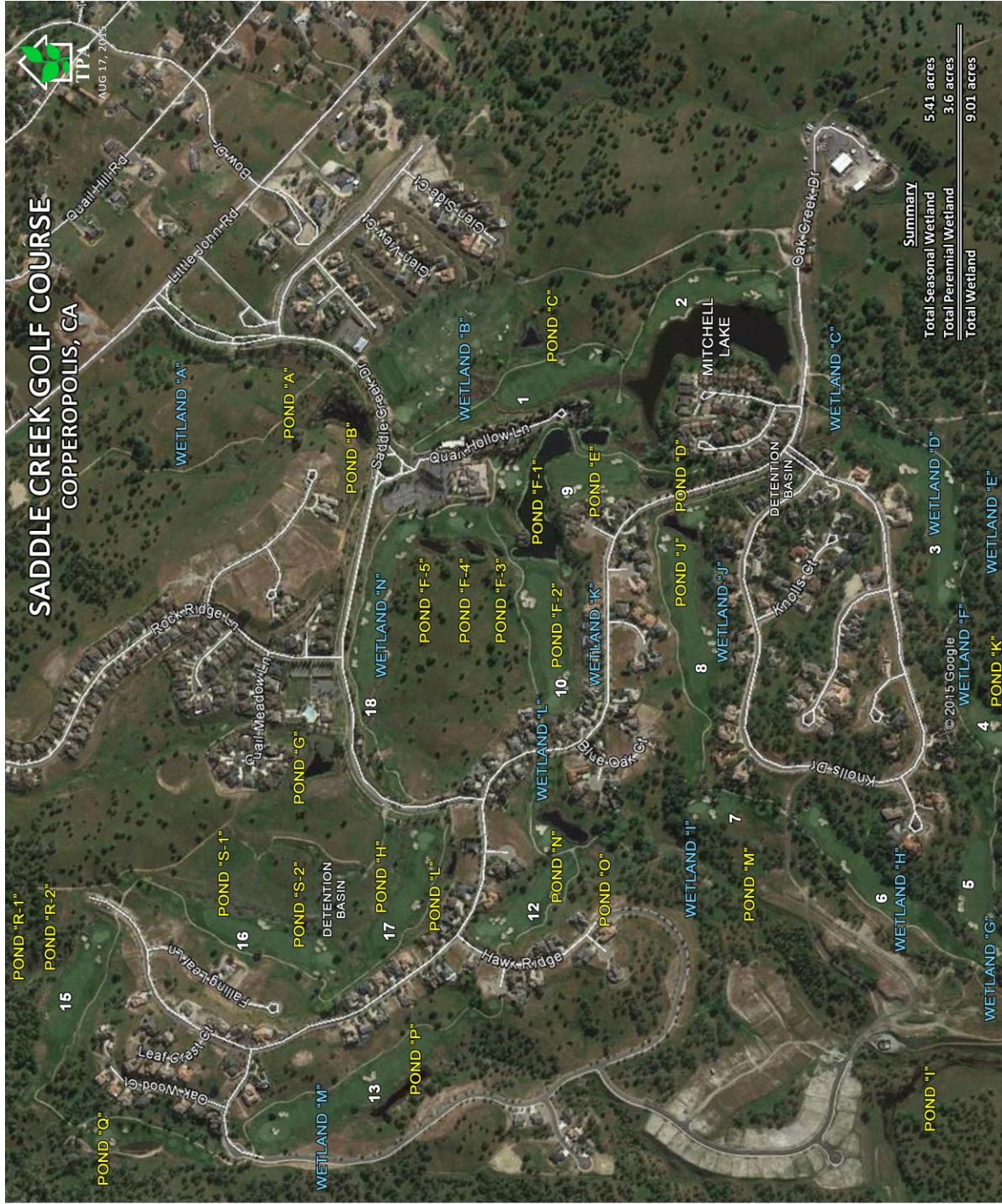
Lake	Location	Volume (cu ft)	Surface A(sq. ft.)	priority	Common Pests	Supplement Fill
A	1st entrance	7353	6,878	C	azolla, duckweed, primrose	no
B	2nd entrance	66,734	69,897	C	azolla, duckweed, primrose	no
C	behind dr range	?	18773	C	cattails	no
Mitch #2 (Mitchell Lake)		574,992	262,877	A	cattails, plank algae	no
D	right #9 ladies tee	20,092	9,329	C	azolla, duckweed, cattails	no
E	behind #9 ladies tee	?	27,901	A	azolla, duckweed, primrose, cattails, fila algae	no
F-1	Lodge (irrigation)	965,092	140,551	A	azolla, duckweed, primrose, fila algae	no (irrig fill)
F-2	waterfall	with F-1	1,546	B	azolla, duckweed, primrose, fila algae	no (irrig fill)
F-3	right #10 gold tee	with F-1	4,277	A	azolla, duckweed, primrose, fila algae	no (irrig fill)
F-4	#27 green	61,014	16,341	B	azolla, duckweed	yes
F-5	#18 green	with F-4	17,406	A	azolla, duckweed, plank algae	yes
G	Sportscenter	141,722	41,872	A	primrose, cattails, fila algae	yes
H	left #17 green	2,523	3,881	X	(EVAPORATION POND)	no
I	right #17 green	?	4,138	B	cattails	yes
J	#8 green	78,481	17,626	A	azolla, duckweed, primrose, cattails, fila algae, plank algae	no
K	left #4 green	90,261	15,874	A	azolla, duckweed, cattails, plank algae	yes
L	behind #5 green	21,733	11,753	B	azolla, duckweed, cattails, fila algae	yes
M	left #7 green	5,304	3,612	X	(EVAPORATION POND)	no
N	#11 green	39,750	30,285	A	azolla, duckweed, cattails, fila algae, plank algae	no
O	#12 tee	17,941	10,992	B	azolla, duckweed, cattails, fila algae	no
P	#13	19,448	35,468	A	azolla, duckweed, fila algae, plank algae	yes
Q	#14	6,577	12,039	A	azolla, duckweed, cattails, fila algae	yes
S-1	#16	?	31,552	A	azolla, duckweed, primrose, cattails, fila algae	yes
S-2	#16	with S-1				
R-1	lower #15	24,960	11,853	B	azolla, duckweed, primrose, fila algae	yes
R-2	upper #15	with R-1	10,511	A	azolla, duckweed, primrose, cattails, fila algae	yes
DBK	Knolls retention basin	90,00	15,000	A	azolla, duckweed, primrose, cattails, fila algae	no
		sq. ft. total	832,232			sq ft of supp fill
		acres	19.10541781			214,630
		sq ft of prior A	635,338			cu ft of supp fill
		sq ft of prior B	56,623			365,715
		sq ft of prior C	104,877			



Hardy M. Strozier, Inc.
495 E. RINCON STREET, SUITE 212
CORONA, CALIFORNIA 92879
TELEPHONE: (951) 444-5600
TELECOPIER: (951) 880-0529
WWW.THEPLANNINGASSOCIATES.NET

GOLF COURSE FEATURES THAT ARE NOT REGULATED IN THE CATEGORIES BELOW

Pond	Seasonal Wetland (Acres)	Perennial Wetland (Acres)	Filter Marsh (Acres)
A	0.16	0.31	0.05
B	0.21	0.55	0.38
C	0.1	0.19	-
D	0	-	-
E	0	-	-
F-1	0	-	-
F-2	0.08	0.12	-
F-3	0.03	0.08	-
F-4	0.05	0.15	-
F-5	0.06	0.18	-
G	0.1	0.65	0.09
H	0.11	-	0.02
I	0	-	-
J	0	-	-
K	0.09	0.16	0.03
L	0	-	-
M	0.1	-	-
N	-	-	-
O	0	-	-
P	0	-	-
Q	0	-	-
R-1	0.08	0.13	-
R-2	0.06	0.13	0.01
S-1	0	-	-
S-2	0	-	-
Mitchell	-	-	0.07
Total	1.23	2.65	0.65



Category	Acres
Total Seasonal Wetland	5.41 acres
Total Perennial Wetland	3.6 acres
Total Wetland	9.01 acres

Copperopolis Saddle Creek Golf Course
Baseline Water Needs Chart

Exhibit C

Pond	Volume (cu ft)	Volume (Acre feet)	Volume (Gallons)	Area (Acres)	% of Pond that is Perennial	# of Gallons needed to meet perennial holding capacity
A	7,353	0.17	55,000	0.52	60%	33,000
B	66,734	1.53	499,170	1.14	48%	239,602
C	?			0.29	66% ?	
D	20,092	0.46	150,288		Unregulated	0
E					Unregulated	0
F-1	965,092	22.16	7,218,888		Unregulated	0
F-2	10,615 (of F-1)	0.24	79,400	0.20	60%	47,640
F-3	28,953 (of F-1)	0.66	216,568	0.11	73%	157,504
F-4	61,014	1.40	456,385	0.20	75%	342,289
F-5				0.24	75%	Part of F-5
G	141,722	3.25	1,060,081	0.84	77%	816,262
H	2,523	0.06	18,872	0.13	Seasonal	0
I					Unregulated	0
J	78,481	1.80	587,038		Unregulated	0
K	90,261	2.07	675,152	0.28	57%	384,837
L	21,733	0.50	162,563		Unregulated	0
M	5,304	0.12	39,674		Seasonal	0
N	39,750	0.91	297,330			0
O	17,941	0.41	134,199		Unregulated	0
P	19,448	0.45	145,471		Unregulated	0
Q	6,577	0.15	49,196		Unregulated	0
R-1	24,960	0.57	186,701	0.41	63%	118,396
R-2 (part of R-1)						Part of R-1
S-1					Unregulated	0
S-2 (part of S-1)						Part of S-2
Mitchell				0.07	Seasonal	0

Total # of Gallons to meet the perennial holding capacities of permit and management plan regulated water elements: 2,139,529 *

? Data was unavailable in the Mr. Pitto Pond Detail Chart (Exhibit A)

* This number is a baseline measurement, it does not account for any loss of water due to evaporation or ground seepage.

Pat Smyth Annual Water Data

Ponds

- A-** 1,849,671 gallons
- B-** 3,435,430 gallons
- C-** Never needs to be filled
- D-** 149,531 gallons
- F-2-** 70,893 gallons
- F-3-** Never needs to be filled
- F-4-** 482,354 gallons
- F-5-** 892,593 gallons
- G-** 2,059,072 gallons
- H-** Never filled (Seasonal)
- I-** Never filled (Seasonal)
- J-** 298,962 gallons
- K-** 1,008,071 gallons
- L-** 605,686 gallons
- M-** Seasonal
- N-** Never needs water
- O-** Never needs water
- P-** 231,976 gallons
- Q-** 714,522 gallons
- R-1 & R-2** – 1,593,988
- S-1 & S-2** – 1,185,190

Wetlands

We only supplement Wetlands **J** and **K** for a total of 400,000 gallons per year. 200,000 per wetland, the rest are seasonal or stay full and don't require supplemental fill.

Total gallons for Ponds and Wetlands: 15,166,778 gallons

Copperopolis Saddle Creek Golf Course
Evaporation and Seepage Water Needs Chart

Exhibit E

Pond	Volume (cu ft)	Volume (Acre feet)	Volume (Gallons)	Area (Acres)	Water Added Anually (Gallons)	% of Pond that is Perennial	Water needed to meet perennial required water level (Gallons)
A	7,353	0.17	55,000	0.52	1,849,671	60%	1,109,803
B	66,734	1.53	499,170	1.14	3,435,430	48%	1,649,006
C				0.29	Never needs irrigation	66%	0
D	20,092	0.46	150,288		149,531	Unregulated	0
E						Unregulated	0
F-1	965,092	22.16	7,218,888			Unregulated	0
F-2			0	0.20	70,893	60%	42,536
F-3			0	0.11	Never needs irrigation	73%	0
F-4	61,014	1.40	456,385	0.20	482,354	75%	361,766
F-5				0.24	892,593	75%	669,445
G	141,722	3.25	1,060,081	0.84	2,059,072	77%	1,585,485
H	2,523	0.06	18,872	0.13	Seasonal	Seasonal	0
I						Unregulated	0
J	78,481	1.80	587,038		298,962	Unregulated	0
K	90,261	2.07	675,152	0.28	1,008,071	57%	574,600
L	21,733	0.50	162,563		605,686	Unregulated	0
M	5,304	0.12	39,674		Seasonal	Seasonal	0
N	39,750	0.91	297,330		Never needs irrigation		0
O	17,941	0.41	134,199		Never needs irrigation	Unregulated	0
P	19,448	0.45	145,471		231,976	Unregulated	0
Q	6,577	0.15	49,196		714,522	Unregulated	0
R-1	24,960	0.57	186,701	0.41	1,593,988	63%	1,010,822
R-2 (part of R-1)							
S-1					1,185,190	Unregulated	0
S-2 (part of S-1)							
Mitchell				0.07	Seasonal	Seasonal	0

Total Gallons Supplemented for Ponds:	Total Gallons Supplemented for Perennial Parts of Ponds:
14,577,939	7,003,463

Wetlands J and K		400,000	400,000
------------------	--	---------	---------

Total Water in Gallons Needed to keep all Ponds and Wetlands full Annually:

Gallons Needed for Perennial Parts of regulated Ponds and Wetlands Annually:

14,977,939

7,403,463

* Providing water for just the perennial parts of the ponds will account for a savings of 7,574,476 gallons of water annually