

RESOLUTION NO. 07-001
SADDLE CREEK COMMUNITY SERVICES DISTRICT

A RESOLUTION OF CONSOLIDATION AND REQUEST OF
CONSOLIDATION WITH THE AUGUST 28, 2007 ELECTION.

WHEREAS, pursuant to the Election Laws of the State of California whenever two or more elections are called to be held in the same territory or in territory that is part of the same, they may be consolidated by order of the governing body ordering the elections.

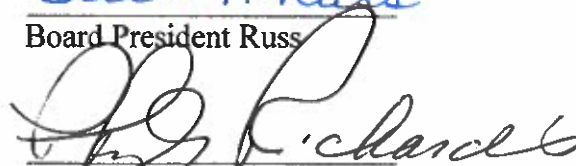
NOW THEREFORE BE IT RESOLVED that the Saddle Creek Community Services District Board of Directors does hereby order a consolidation of elections to be held August 28, 2007 with any other district calling an election at the same time.

THE FOREGOING RESOLUTION was introduced at a regular meeting of the Saddle Creek Community Services District held on April 17, 2007, by Board Member Marsden who moved its adoption, which was duly seconded by Board Member Kenyon and the Resolution was adopted by the following vote:

AYES: 5
NOES: 0
ABSTAIN: 0
ABSENT: 0

-SEAL-


Board President Russ


CSD Clerk, Phyllis Richards



**Election Department
Calaveras County
891 Mountain Ranch Rd.
San Andreas, CA 95249
(209) 754-6376**

**Karen Varni
County Clerk-Recorder**

TO: ALL SPECIAL DISTRICTS
FROM: DEBORAH A. SMITH, ELECTION COORDINATOR *DS*
DATE: MARCH 1, 2006
RE: AUGUST 28, 2007 GENERAL DISTRICT ELECTION

As a result of our letter to you last month relative to the forthcoming November election, I am enclosing a Notice of Elective Offices to be Filled. I have completed the upper portion for you. Please check it carefully with your records. Should there be a discrepancy, please call me so that we may discuss the problem prior to changing it.

If it agrees with your records, the secretary must then date and sign the original form. Each district will keep the photostatic copy for its records. The original, together with a copy of a boundary map of your district, must then be returned to our office.

Generally, the districts elect to have the candidate bear the expense of the Candidate's Statement if they choose to file one. You will note that the form is set up this way. If your district chooses to bear the expense, you will need to correct the form to reflect that the district is to pay the publication costs of a Candidate's Statement.

The deadline for returning the notice and map is April 25, 2007. However, we would appreciate its return at your earliest convenience. This will aid us greatly in meeting our deadlines.

Also, we are asking all Districts to pass the enclosed resolution so that all elections called for August 28, 2007 may be consolidated. The resolution must be acted upon and a copy filed with our office no later than June 1, 2007.

Also, as a reminder, pursuant to section 10520 of the Elections Code, districts involved in a general district election shall reimburse the county elections official for actual costs incurred for conducting the election.

Should you have any questions or concerns, please do not hesitate to contact me at 754-6376.

Enclosures

*Notice of Elective Offices to be
Filled and Transmittal of Map and Boundaries*

**SADDLE CREEK
COMMUNITY SERVICES DISTRICT**

To the County Elections Official of Calaveras County.

Notice is hereby given that the elective offices of the district to be filled at the general district election on August 28, 2007 are as follows:

Two Directors - 4 year terms

The qualifications of a nominee and of an elective officer of the district are as follows:

Registered voter residing within said district.

A map showing the boundaries and the boundaries of the divisions of the district, if any, within this county is attached hereto.

The Candidate is to pay for the publication of a Candidate's Statement.

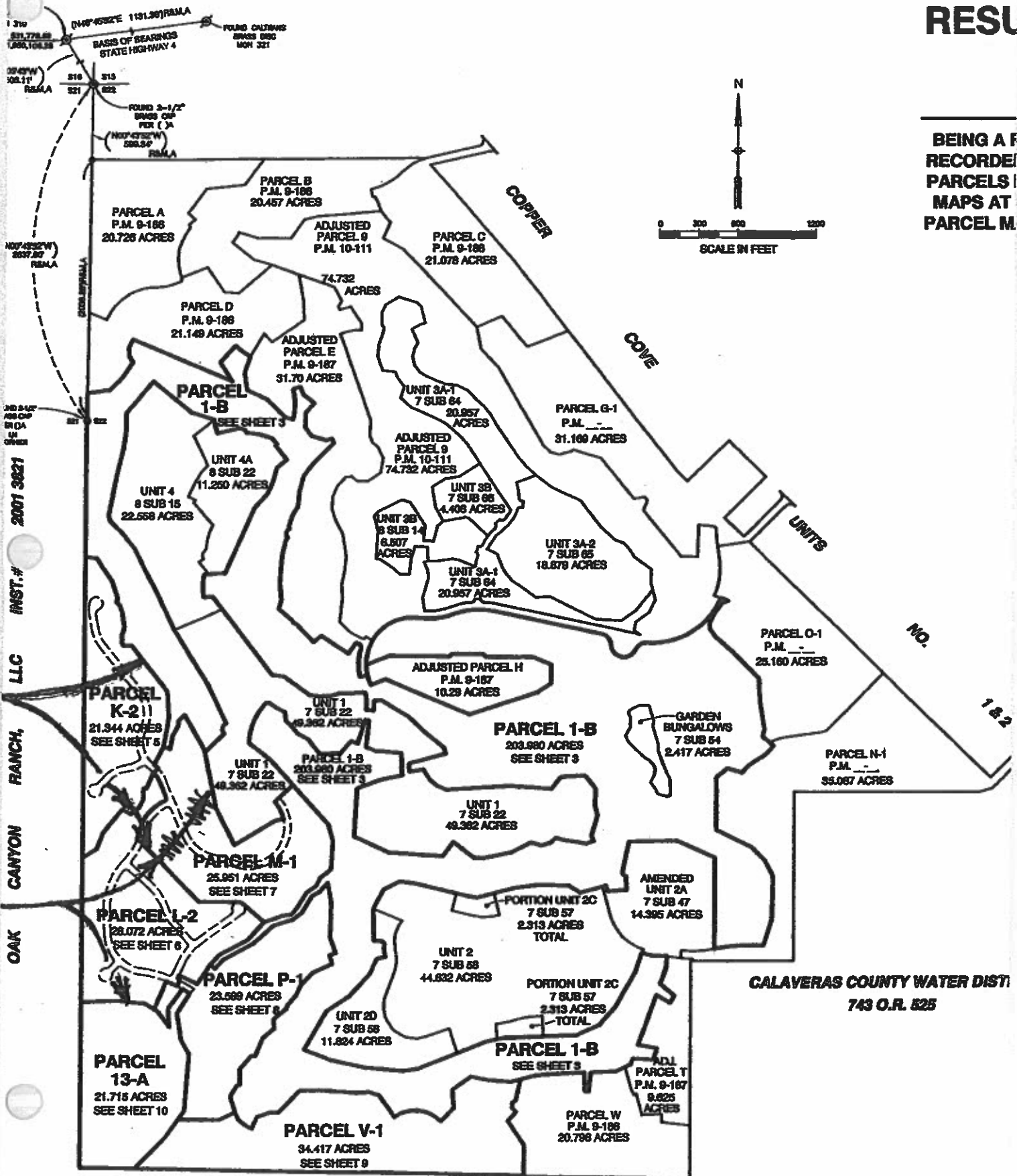
Dated _____

(Seal of the District)

(District Secretary)

RESU

BEING A F
RECORDED
PARCELS I
MAPS AT
PARCEL M



OAK CANYON RANCH, LLC INST. # 2007 3621

2007 3621